

# Flood durations

Scale 1:67,000



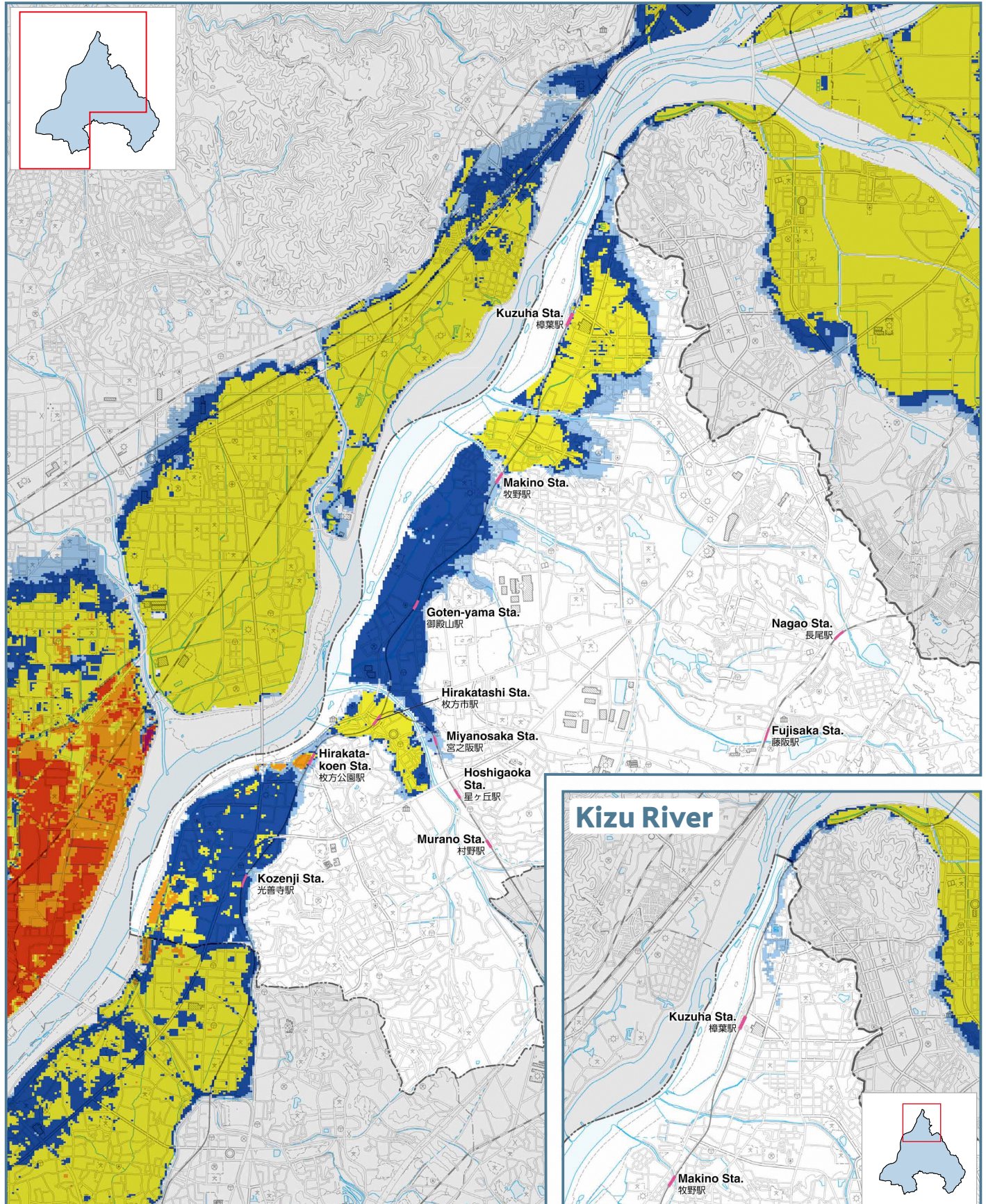
## [Flood durations]

336 hr. or greater	168 hr. or greater and less than 336 hr.
72 hr. or greater and less than 168 hr.	24 hr. or greater and less than 72 hr.
12 hr. or greater and less than 24 hr.	Less than 12 hr.

Flood duration projections are based on a simulation of flooding conditions in the event the Yodo River and Kizu River overflow as a result of the maximum anticipated rainfall.

## Yodo River

Flood durations (Yodo River and Kizu River)





# Flood durations

Scale 1:67,000

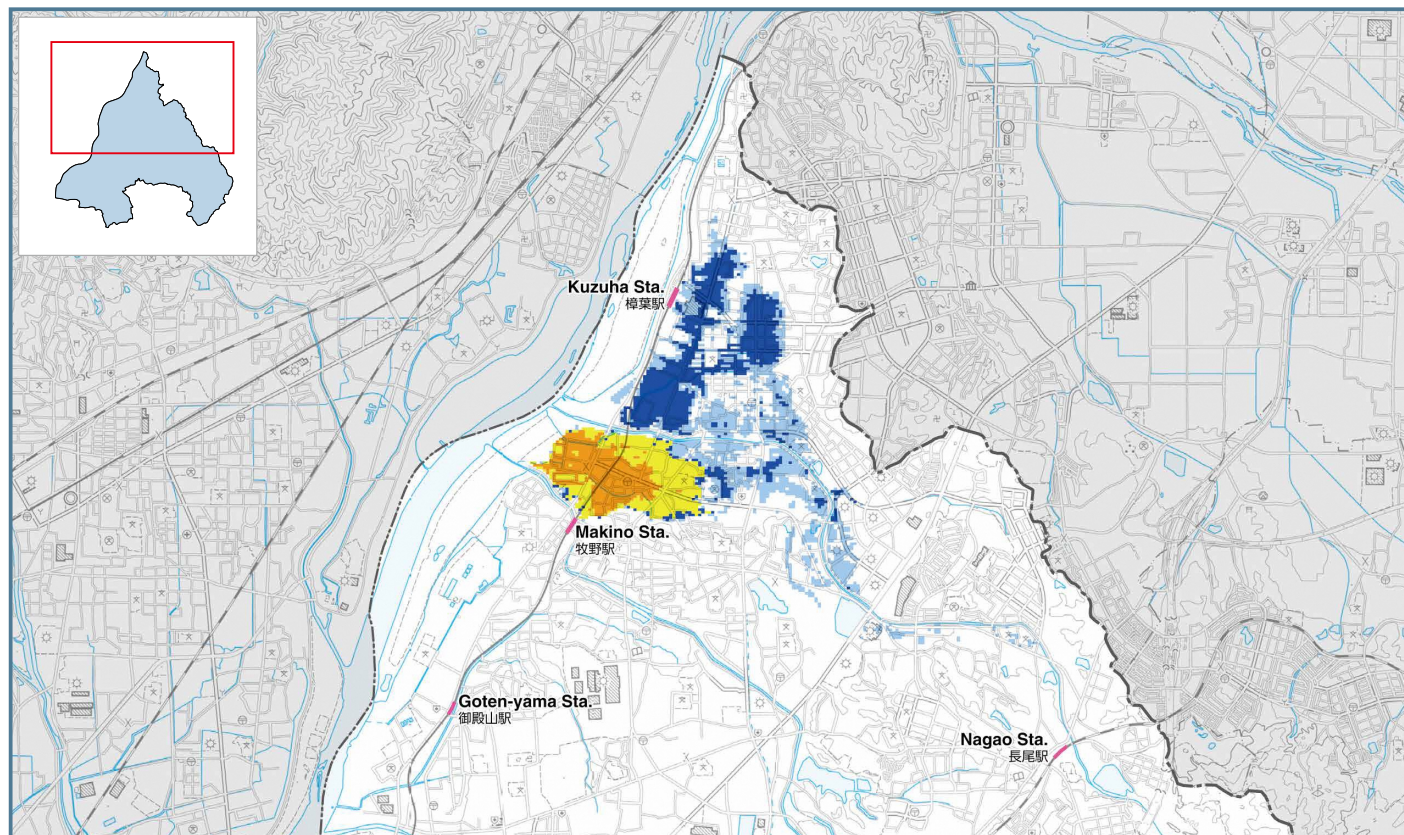


## [Flood durations]

72 hr. or greater and less than 168 hr.	24 hr. or greater and less than 72 hr.
12 hr. or greater and less than 24 hr.	Less than 12 hr.

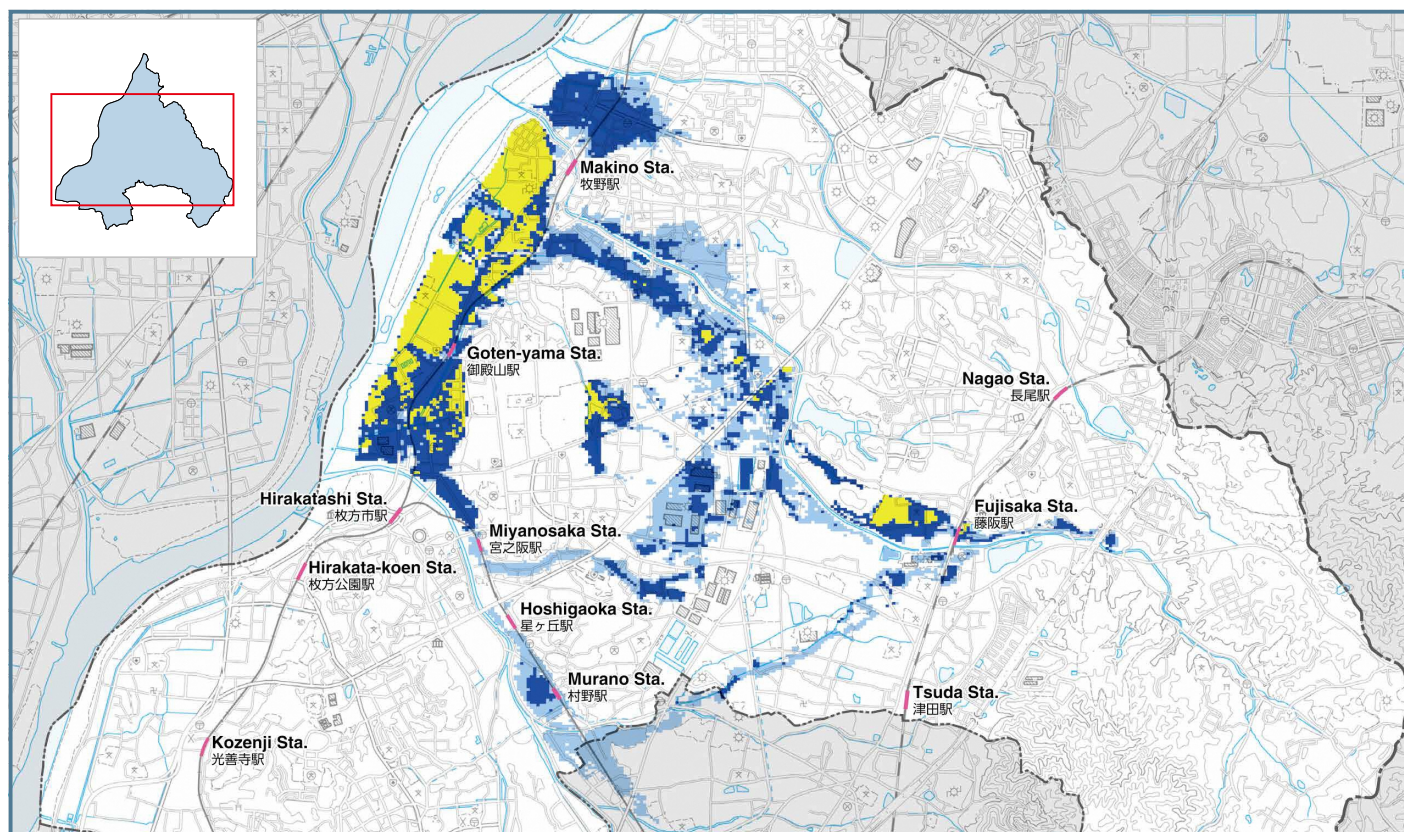
Flood duration projections are based on a simulation of flooding conditions in the event the Funahashi River and Hotani River overflow as a result of the maximum anticipated rainfall.

## Funahashi River



Flood durations (Funahashi River and Hotani River)

## Hotani River





# Flood durations

Scale 1:67,000

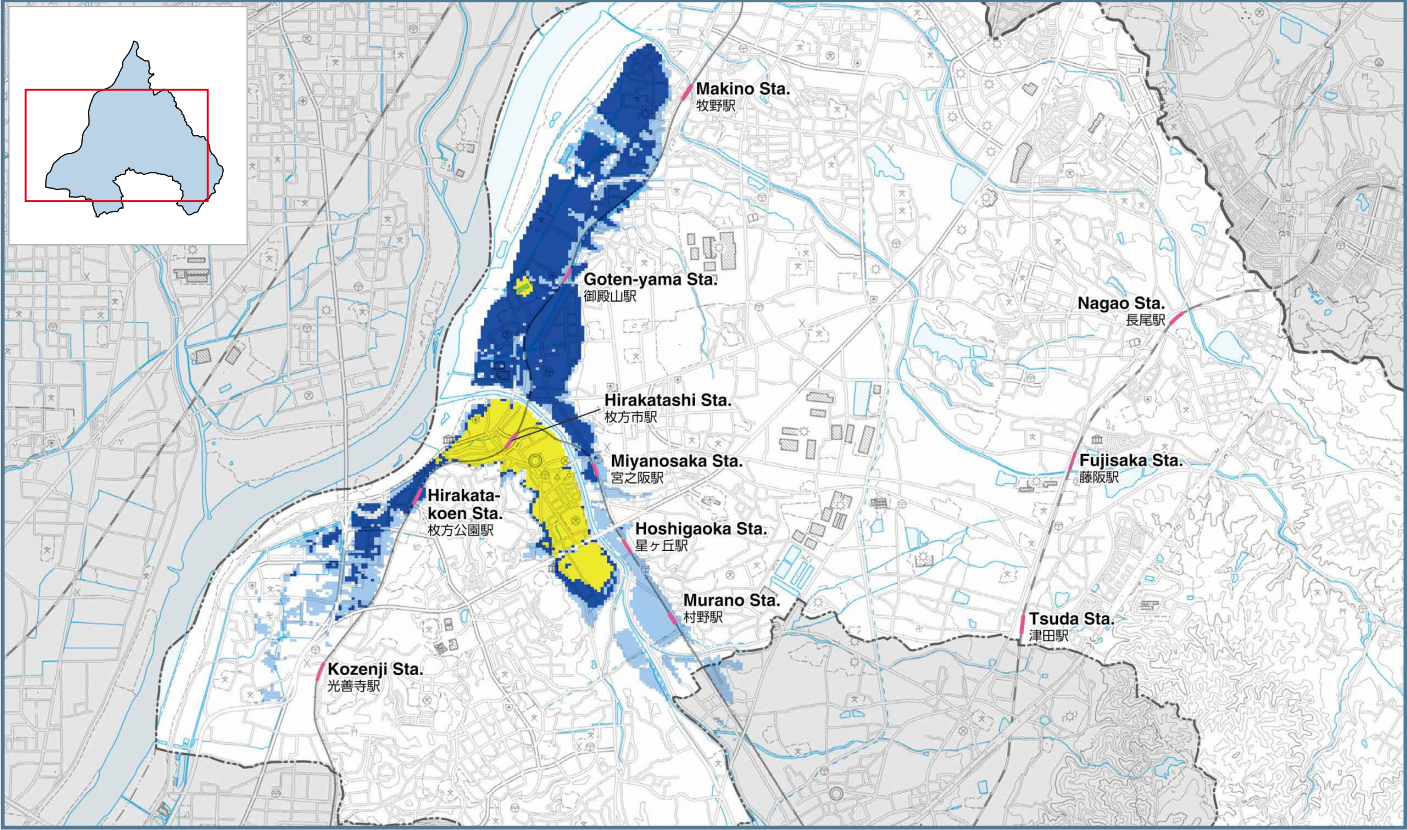


## [Flood durations]

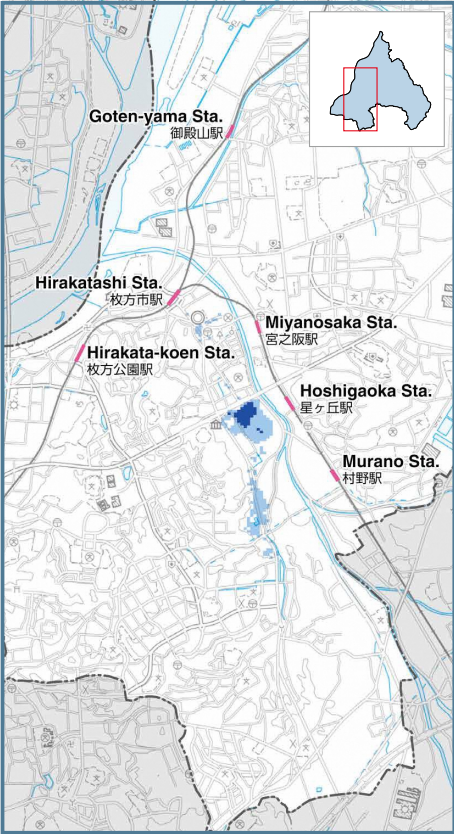
72 hr. or greater and less than 168 hr.	24 hr. or greater and less than 72 hr.
12 hr. or greater and less than 24 hr.	Less than 12 hr.

Flood duration projections are based on a simulation of flooding conditions in the event the Amano, Toda, Kita, and Mae Rivers overflow as a result of the maximum anticipated rainfall.

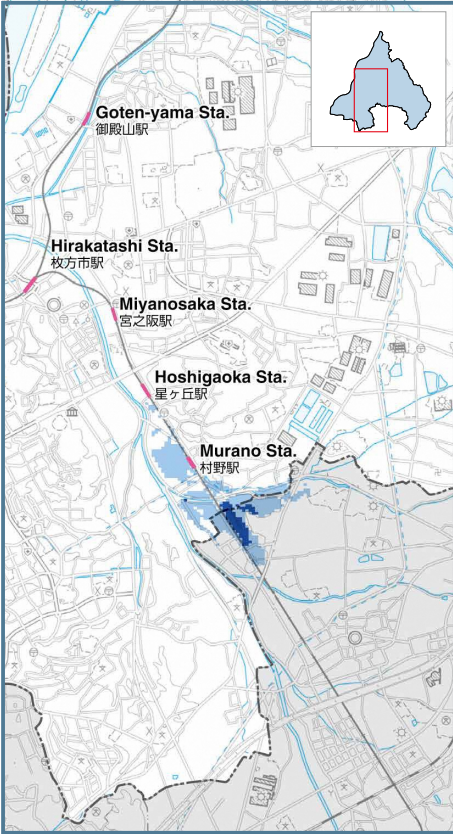
## Amano River



## Toda River



## Kita River



## Mae River

