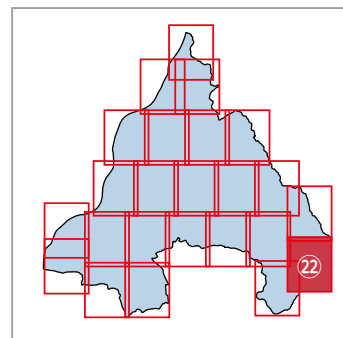


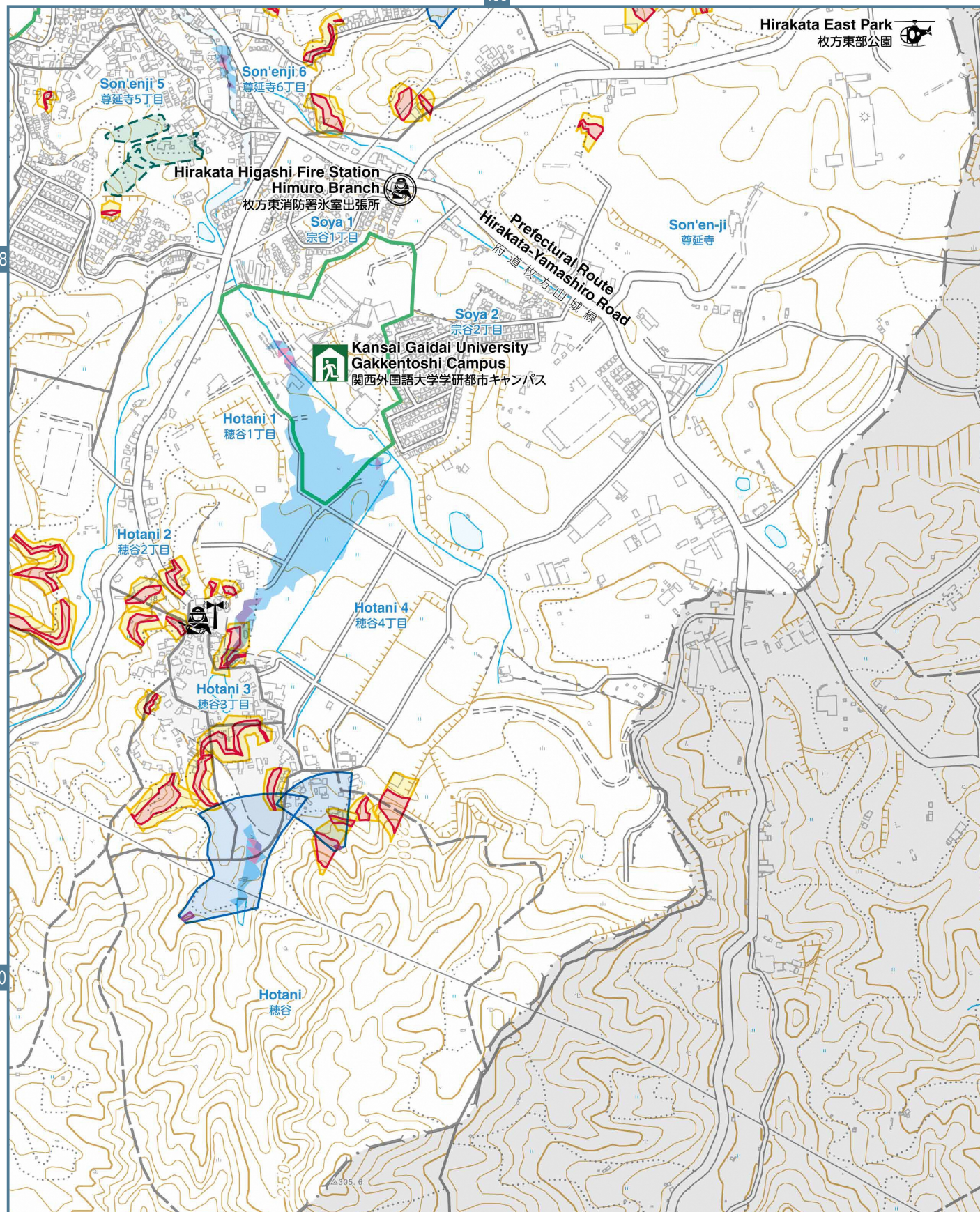
# 22 Rainfall-triggered Flooding and Landslide Hazard Map

0 100 200 300m 1/10,000

- [Landslide]**
- Landslide special warning area (steep slope)
  - Landslide warning area (steep slope)
  - Landslide warning area (debris flow)
  - Landslide warning area (landslide)
  - Landslide special warning area (debris flow)
- [rainfall-triggered flooding depth]**
- Less than 0.5m
  - 0.5 m or greater and less than 1 m
  - 1 m or greater
- [Disaster readiness information]**
- Primary shelter
  - Secondary shelter
  - Wide-area shelter
  - Temporary shelter
  - Regional disaster base hospital
  - Initial emergency medicine facility
  - Designated disaster medical center
  - Hirakata City disaster medical center or disaster medicine partner hospital
  - Base first-aid station



109



22 Rainfall-triggered Flooding and Landslide Hazard Map

- [Map legend]**
- Police station or police stand
  - Fire department or fire station
  - Flood control association
  - Supply warehouse

See page 43 for map legends. 111