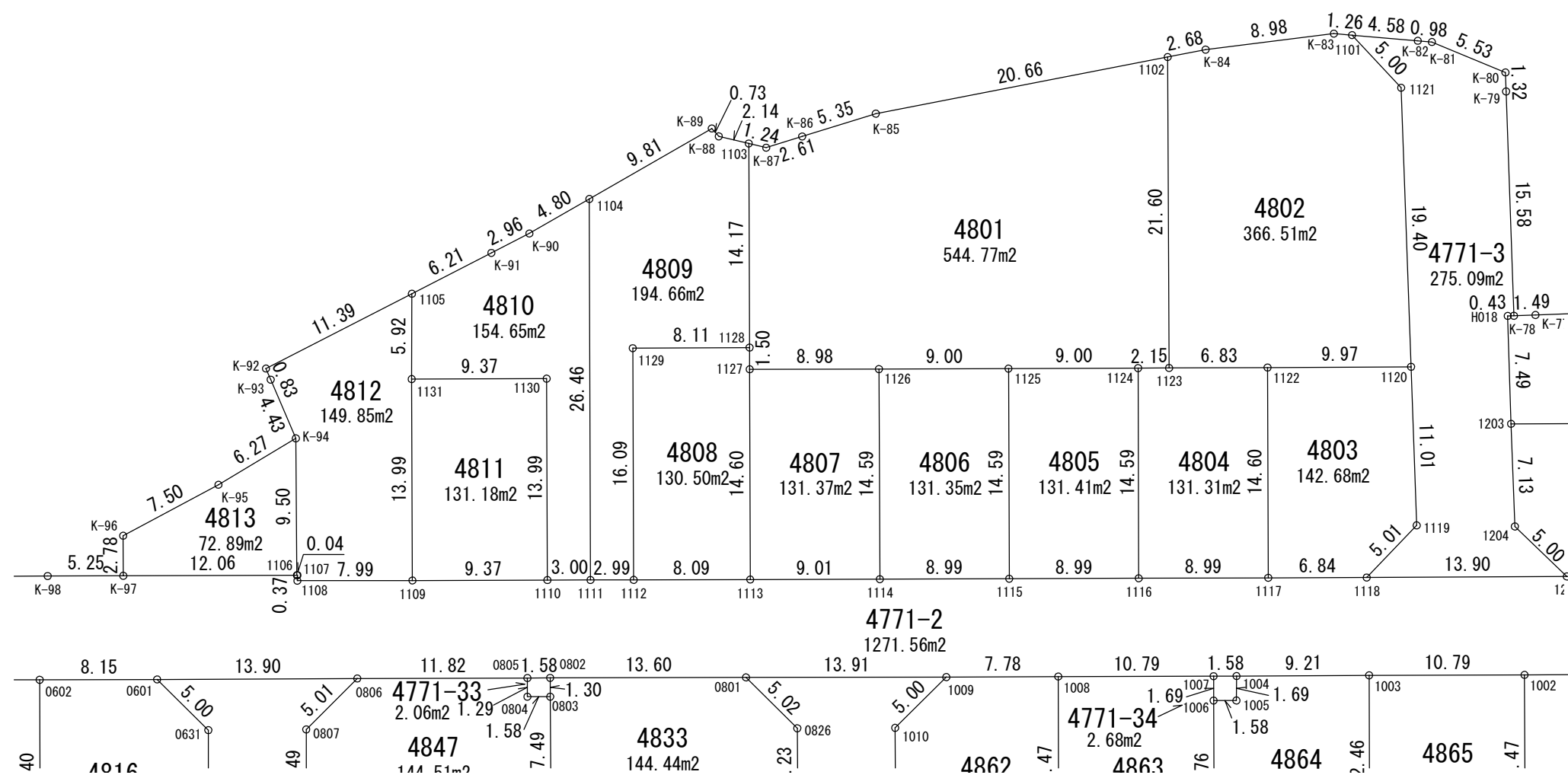
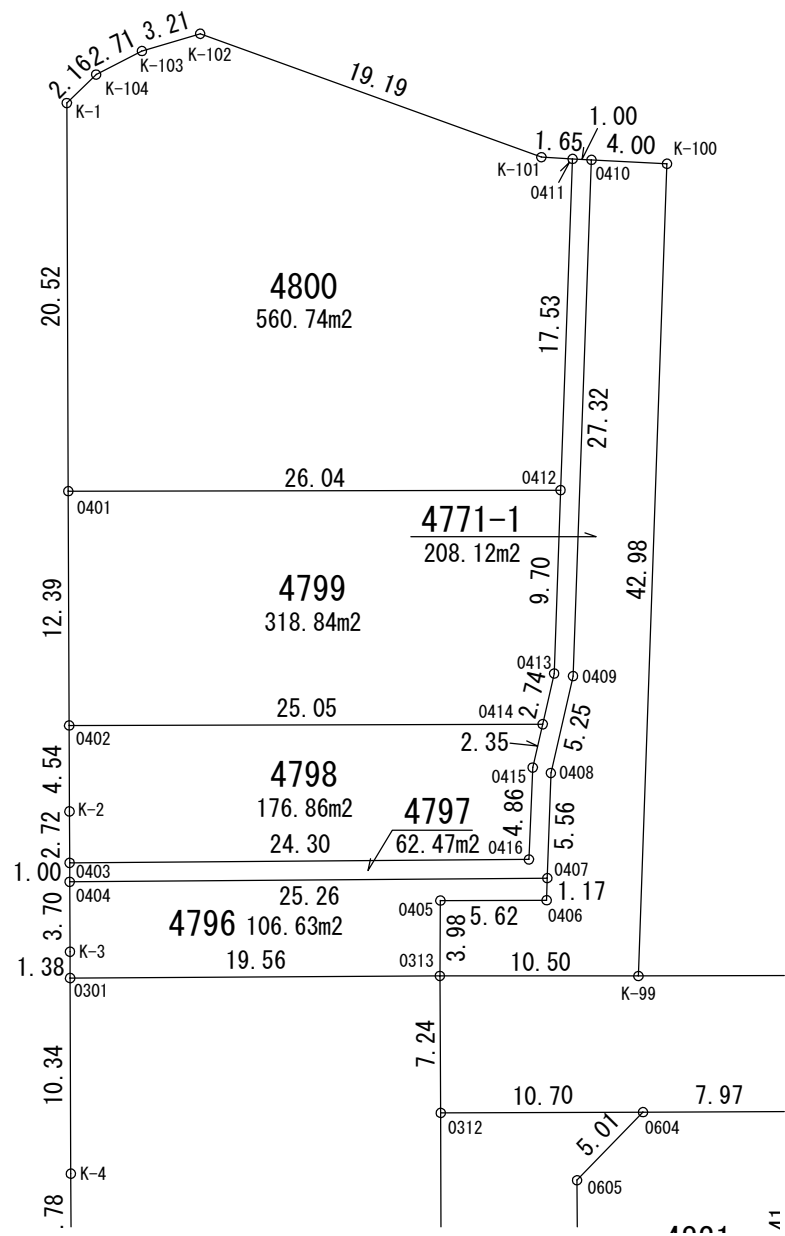
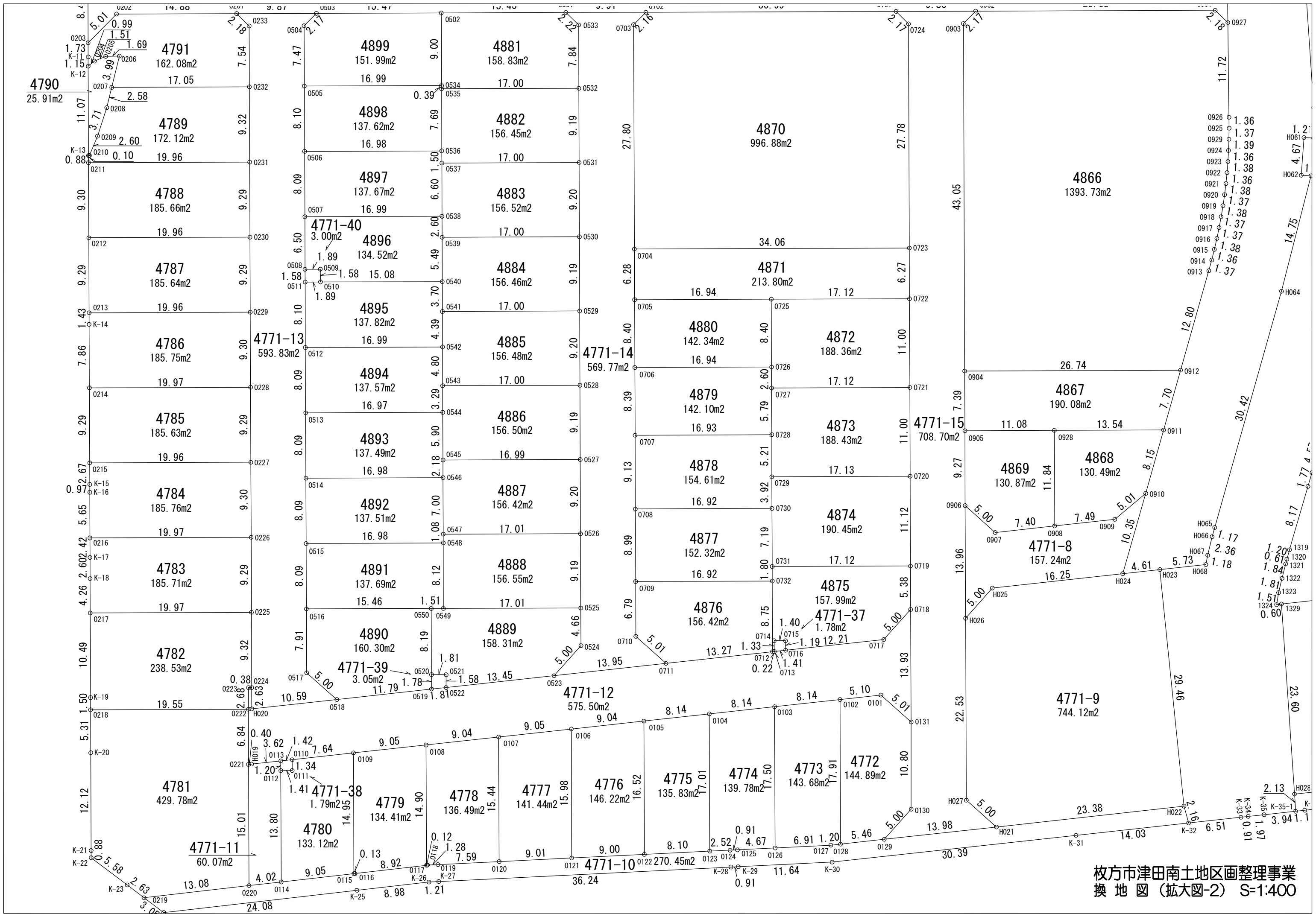


地番	面積
4771-1	208.12
4771-2	1271.56
4834	275.06
4771-4	257.18
4771-5	1578.11
4771-6	43.83
4771-7	1541.89
4771-8	157.24
4771-9	744.12
4771-10	270.45
4771-11	60.07
4771-12	575.50
4771-13	593.83
4771-14	569.77
4771-15	708.70
4771-16	1292.50
4771-17	525.04
4771-18	502.30
4771-19	501.94
4771-20	2940.40
4771-21	1723.01
4771-22	187.01
4771-23	710.75
4771-24	63.26
4771-25	121.73
4771-26	1201.08
4771-27	330.68
4771-28	330.59
4771-29	344.61
4771-30	705.37
4771-31	2.06
4771-32	2.68
4771-33	2.06
4771-34	2.68
4771-35	1.86
4771-36	2.06
4771-37	1.78
4771-38	1.79
4771-39	3.05
4771-40	3.00
4771-41	1.68
4771-42	2.29
4771-43	1.71
4771-44	1.74
4772	144.89
4773	143.68
4774	139.78
4775	135.83
4776	146.22
4777	141.44
4778	136.49
4779	134.41
4780	133.12
4781	142.78
4782	238.53
4783	185.71
4784	185.76
4785	185.63
4786	185.75
4787	185.64
4788	185.66
4789	172.12
4790	25.91
4791	162.08
4792	131.59
4793	258.88
4794	45.84
4795	1063.21
4796	106.63
4797	62.47
4798	176.86
4799	318.84
4800	560.74
4801	544.77
4802	366.51
4803	142.68
4804	131.31
4805	131.41
4806	131.35
4807	131.37
4808	130.50
4809	194.66
4810	154.65
4811	131.18
4812	149.85
4813	72.89
4814	130.21
4815	130.39
4816	150.61
4817	137.70
4818	137.73
4819	137.44
4820	135.01
4821	137.71
4822	137.68
4823	131.24
4824	137.12
4825	137.12
4826	137.40
4827	137.12
4828	137.47
4829	137.42
4830	137.32
4831	137.32
4832	137.32
4833	137.32
4834	137.32
4835	137.32
4836	137.32
4837	137.32
4838	137.32
4839	137.32
4840	137.32
4841	137.32
4842	137.32
4843	137.32
4844	137.32
4845	137.32
4846	137.32
4847	137.32
4848	137.32
4849	137.32
4850	137.32
4851	137.32
4852	137.32
4853	137.32
4854	137.32
4855	137.32
4856	137.32
4857	137.32
4858	137.32
4859	137.32
4860	137.32
4861	137.32
4862	137.32
4863	137.32
4864	137.32
4865	137.32
4866	137.32
4867	137.32
4868	137.32
4869	137.32
4870	137.32
4871	137.32
4872	137.32
4873	137.32
4874	137.32
4875	137.32
4876	137.32
4877	137.32
4878	137.32
4879	137.32
4880	137.32
4881	137.32
4882	137.32
4883	137.32
4884	137.32
4885	137.32
4886	137.32
4887	137.32
4888	137.32
4889	137.32
4890	137.32
4891	137.32
4892	137.32
4893	137.32
4894	137.32
4895	137.32
4896	137.32
4897	137.32
4898	137.32
4899	137.32
4900	137.32
4901	137.32
4902	137.32
4903	137.32
4904	137.32
4905	137.32
4906	137.32
4907	137.32
4908	137.32
4909	137.32
4910	137.32
4911	137.32
4912	137.32
4913	137.32
4914	137.32
4915	137.32
4916	137.32
4917	137.32
4918	137.32
4919	137.32
4920	137.32
4921	137.32
4922	137.32
4923	137.32
4924	137.32
4925	137.32
4926	137.32
4927	137.32
4928	137.32
4929	137.32
4930	137.32
4931	137.32
4932	137.32
4933	137.32
4934	137.32
4935	137.32
合計面積	52016.37

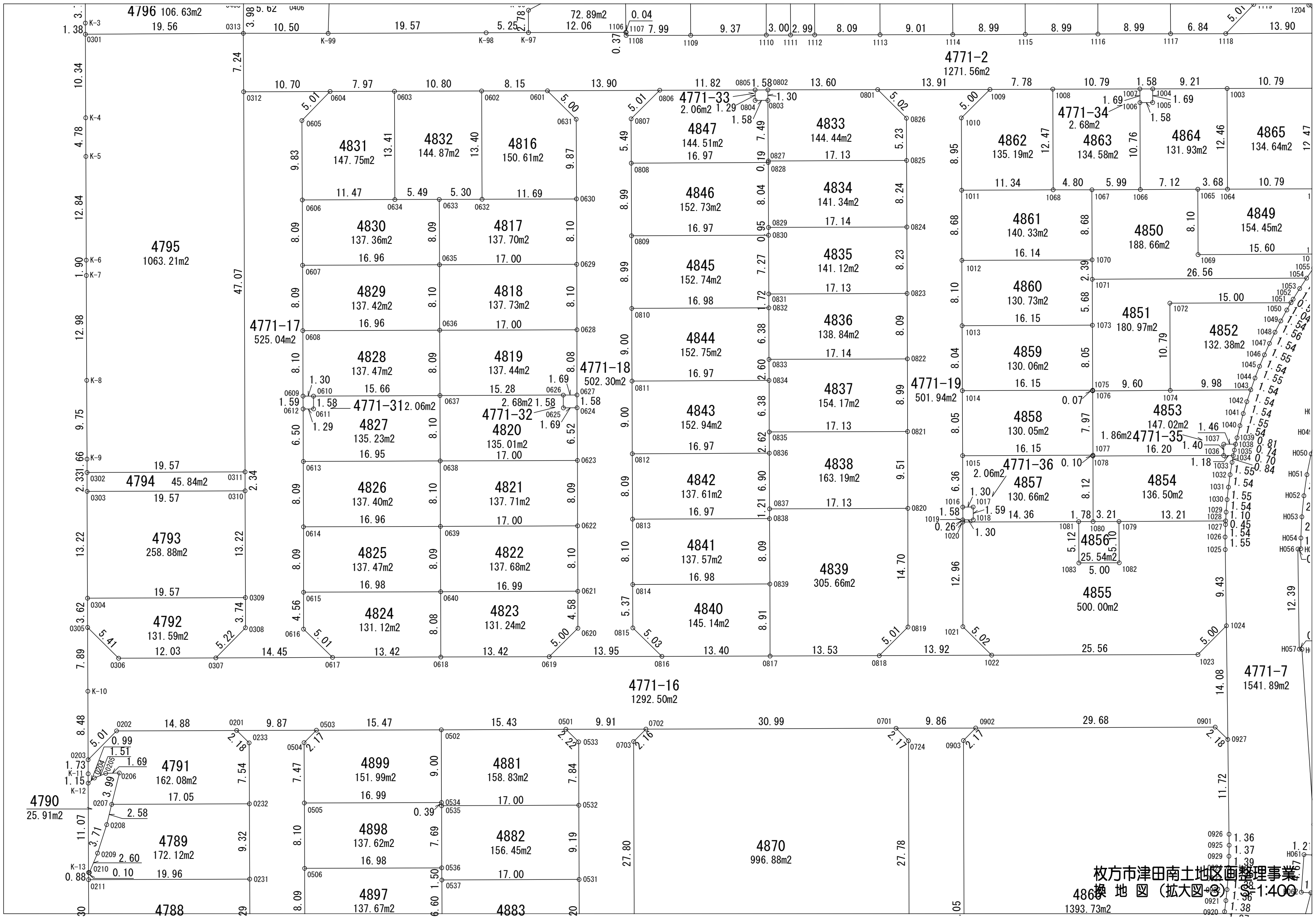
枚方市津田南土地区画整理事業
換地図(全体図) S=1:1000

枚方市津田南土地区画整理組合

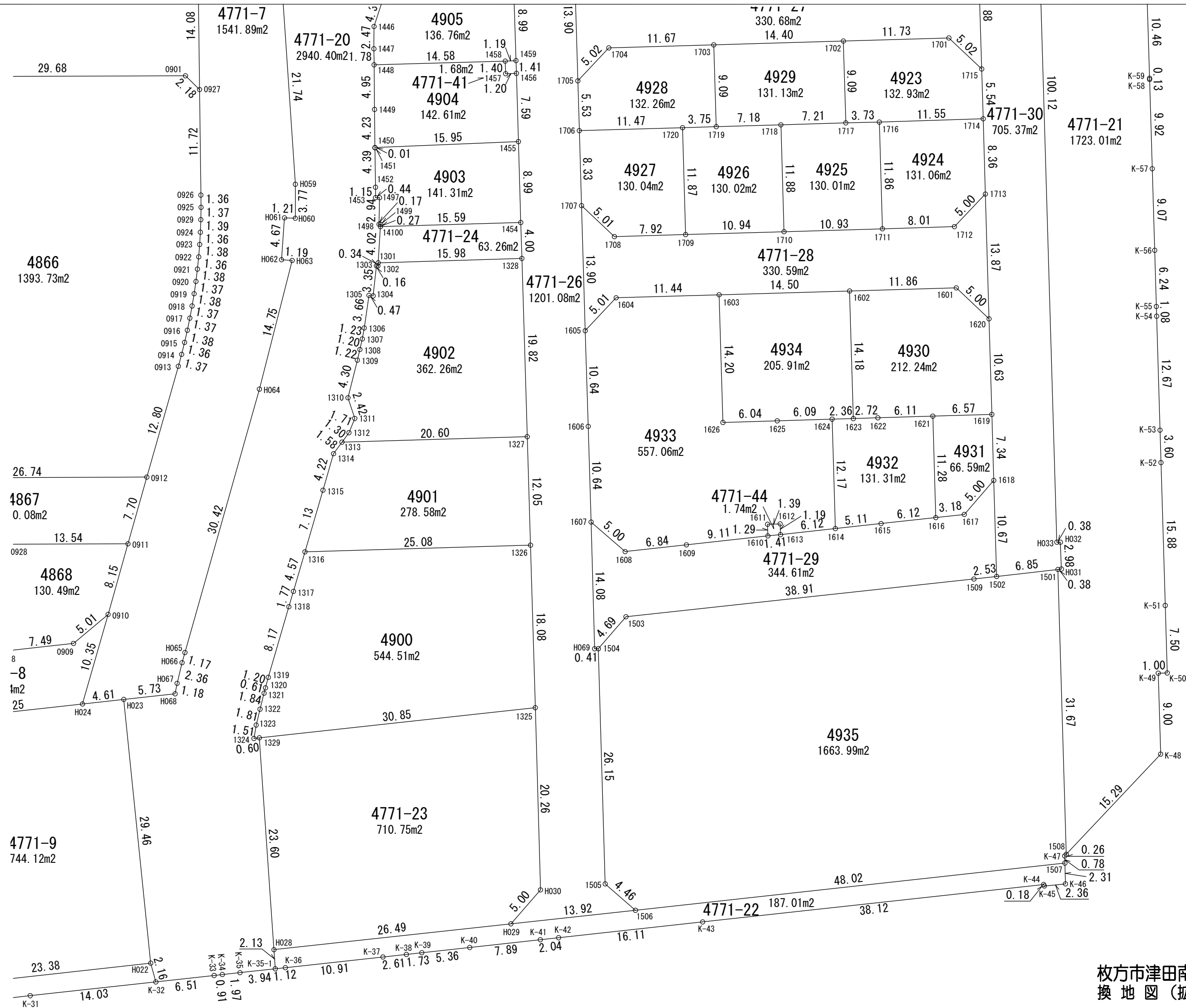




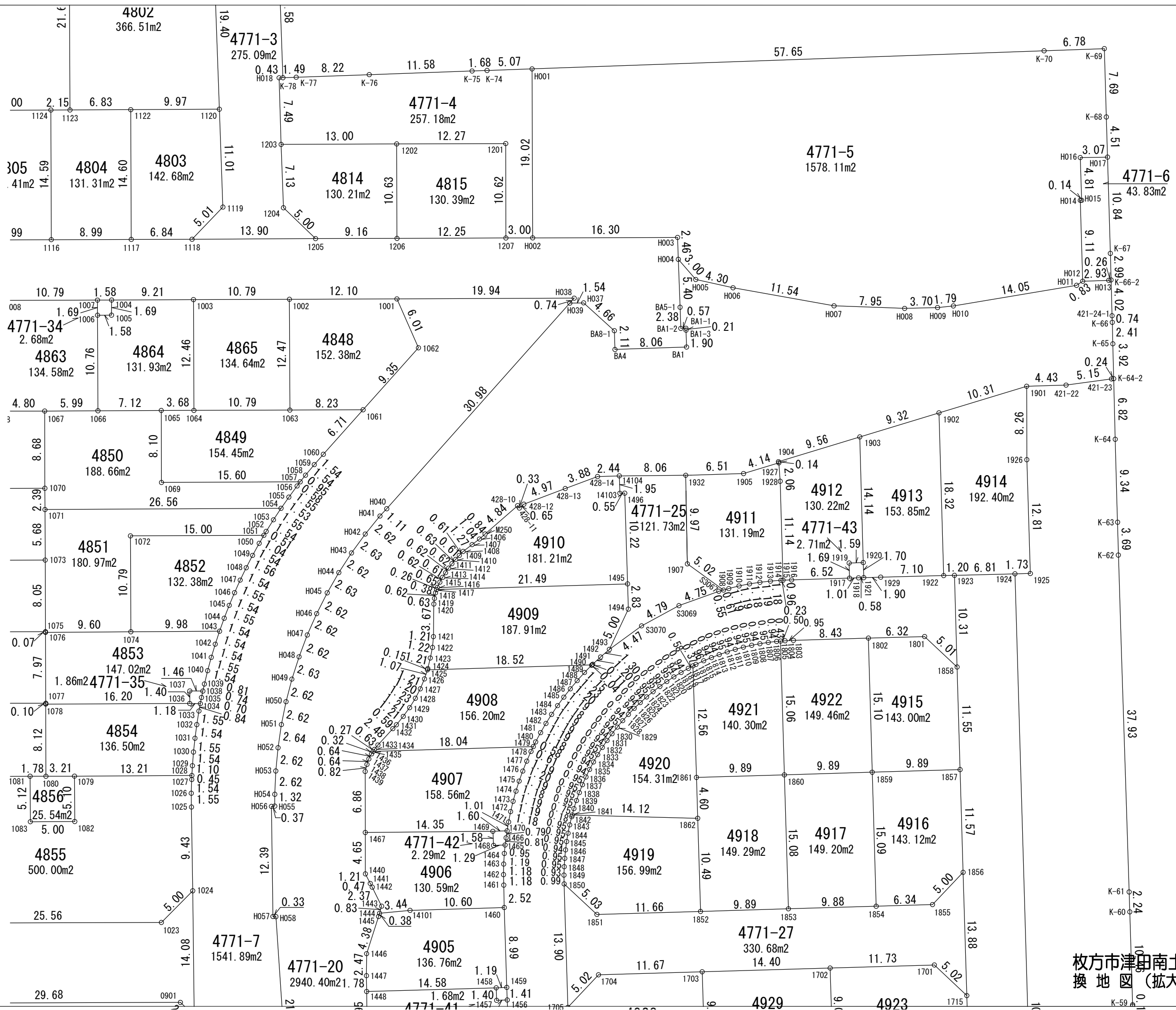
枚方市津田南土地区画整理事業
換地図(拡大図-2) S=1:400



枚方市津田南土地地区画整理事業
 換地 図 (拡大図) ③ S-1:400



枚方市津田南土地区画整理事業
換地図(拡大図-4) S=1:400



枚方市津田南土地地区画整理事業
換地 図 (拡大図-5) S=1:400