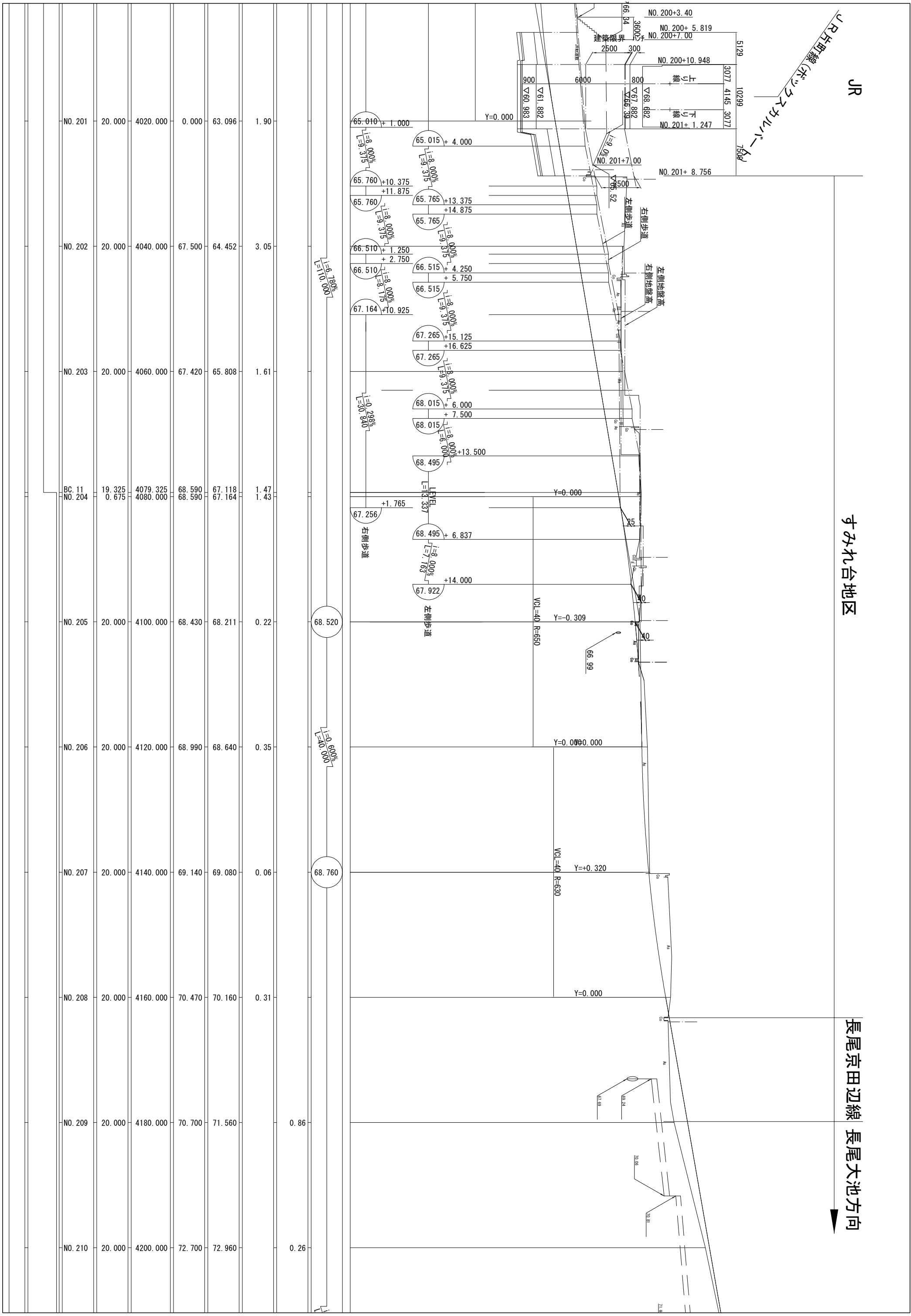


JR

すみれ台地区

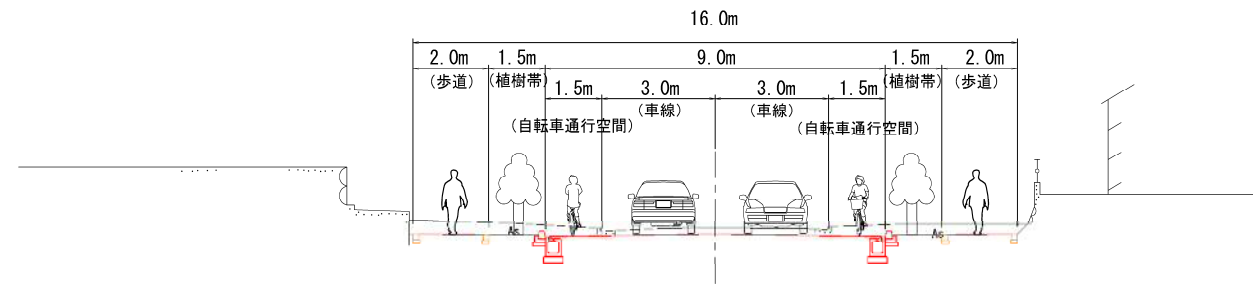
長尾京田辺線 長尾大池方向



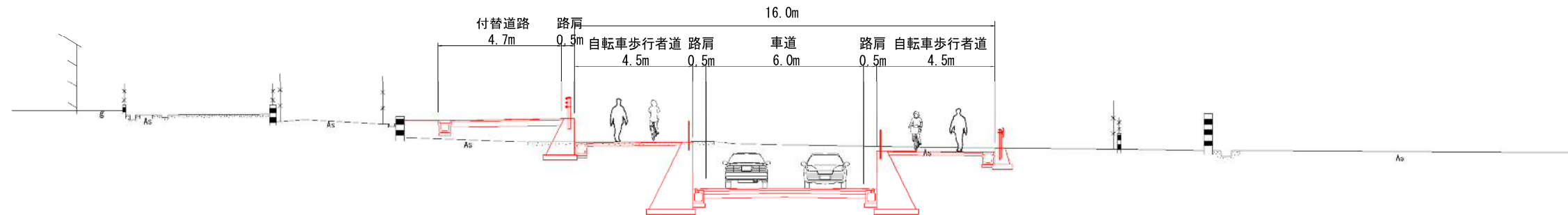
NO. 201	20.000	4020.000	0.000	63.096	1.90
NO. 202	20.000	4040.000	67.500	64.452	3.05
NO. 203	20.000	4060.000	67.420	65.808	1.61
BC. 11 NO. 204	19.325 0.675	4079.325 4080.000	68.590 68.590	67.118 67.164	1.47 1.43
NO. 205	20.000	4100.000	68.430	68.211	0.22
NO. 206	20.000	4120.000	68.990	68.640	0.35
NO. 207	20.000	4140.000	69.140	69.080	0.06
NO. 208	20.000	4160.000	70.470	70.160	0.31
NO. 209	20.000	4180.000	70.700	71.560	0.86
NO. 210	20.000	4200.000	72.700	72.960	0.26

標準断面図

(都市計画道路幅員)



NO. 203



JR高架下付近

