



Sorting and Taking Out Household Trash



June, 2019

英語

We ask for your cooperation in sorting your refuse to make Hirakata into a recycle-oriented city which does not waste resources and reduces garbage.

- Separate refuse thoroughly, putting it in colorless transparent or white semi-transparent plastic bags (so that the contents can be confirmed) 45 liters or under, and take it out.
- Follow the collection day schedule and put trash out by 8:45AM on collection day. (Collection time may vary depending on traffic conditions, etc.)
- Take trash to the designated collection spot of your area.

Inquiries concerning garbage:
Environment Division,
Waste Reduction Office
Tel: 072-849-7969

※ See the Household Garbage Collection Schedule by Area list and fill in what day the trash in your area will be collected in the blank box.

Regular Garbage: collection days every week on &

Small-sized burnable household waste (take out each time without saving it up)

Raw garbage
Food scraps, eggs and shells
Solidified cooking oil, etc.

Fabrics
Rags, handkerchiefs, towels

Tissues

Paper diapers
(Flush waste down the toilet)

Other small-sized burnable waste
(able to fit inside a plastic bag 45 liters or under)
Leather, rubber, nylon, plastics, sponges, and other small items.
(leather shoes, sneakers, sandals, hand bags, audio cassettes,
nozzles of shampoo and conditioner bottles etc., aluminum foil
disposable hand warmers, video tapes, CDs, etc.)

使い捨てカイロ

Points to Note

- ◆ Plant trimmings and fallen leaves count as "small-size bulky refuse", but 1 bag per household may be put out for collection on the latter collection day of the week. (Be sure to write your name)
- ◆ Soak up cooking oil with a cloth or paper and use a solidifying agent, etc., before disposal.
- ◆ Drain liquids away completely from raw kitchen garbage.

PET Bottles & Plastic Containers / Packaging: collection day every week on

PET bottles, plastic containers and packaging from households

PET Bottles

Cups and Packs

Bottles

Trays (plates and containers)

Bags and Wrappers

Tubes

Other plastic wrapping and packaging

Points to Note

- ◆ Remove food scraps and wash before disposal.
 - ◆ Wash items that have contained detergents or other liquids before disposal.
 - ◆ Throw PET bottles and plastic containers and packaging away together.
 - ◆ Remove caps and labels from PET bottles, and throw away together.
 - ◆ Dispose of pump nozzles for shampoo and conditioner bottles etc., as "regular garbage".
- ※ Please see the "Sorting and Taking Out PET Bottles and Plastic Containers/Packaging" paper for further details.

Cans, Bottles, and Glass Materials: collection days every & week on

Under 18-liter steel or aluminum cans, glass bottles, and glass materials from households

Beverage Cans

Gas Canisters for Cooking Stoves / Spray Cans

Food cans / Candy Tins

Oil cans, tins for Nori, etc.

Makeup bottles / Heat resistant glass

Glass Panes

Beverage / condiment bottles

Glassware

Points to Note

- ◆ Remove plastic lids and throw away with "PET bottles and plastic containers/packaging".
- ◆ Remove metal lids and throw away together.
- ◆ Empty all contents and wash before disposal.
- ◆ Empty motor oil cans, 18-liter cans, wares (ceramics, etc.), and mirrors are "small-size bulky refuse".
- ◆ Wrap broken bottles and glass material in newspaper and mark as 「危険」 (Dangerous) before disposal.

Paper (Newspaper, cardboard, magazines, misc. paper): collection days every & week on

Household newspaper, cardboard, magazines, misc. papers (tie together with a string and take them out)

Newspapers

Cardboard

Magazines

Misc. paper products: (primary examples)

Books

Flyers

Posters

Pamphlets

Notebooks

Paper Rolls

Copy Paper

Shredded Paper

Points to Note

- 【 Disposal Method 】
1. Tie newspaper, cardboard and magazines with string.
 2. Tie misc. paper with string or place in a paper bag.
- ◆ Cannot be disposed of in plastic bags.
- ※ However, as an exception, shredded paper may be placed in a colorless transparent or white semi-transparent plastic bag of 45 liters or under to prevent it from blowing away.

Bulky Refuse Collection Applications: 0120-66-8153 "Bulky Refuse Reservation Center"

- Telephone Reception: Monday - Friday (incl. holidays) 9:00AM - 7:00PM
 - Calls for applications are concentrated on the morning after a holiday or weekend and you may not be able to get through.
 - You may apply via the internet, on the Hirakata City Home Page's "粗大ごみ・ネット予約" (Bulky refuse online reservation) under "オンラインサービス" (Online Services).
- ※ Please see the "粗大ごみマニュアル-保存版-" (Bulky Refuse Manual -Home Edition-) for further details.

Small-Size Bulky Refuse (free)

Principle items which count as Small-Size Bulky Refuse:

Small home appliances, etc.

18-liter cans, motor oil cans

Futons

Metal objects / Wares, etc.

Dropping Off Garbage (fee required)

- ◆ Drop it off at the Hotanigawa Waste Disposal Plant (5-1-1 Taguchi, Hirakata City)
- ◆ Application to the Bulky Refuse Reservation Center is required.
- ◆ Each item requires a handling fee for "dropped off garbage".
- ◆ The applicant must come in person to drop off the garbage.
- ◆ Those other than the applicant or businesses may not drop off the garbage.
- ◆ Available times and days for drop off: Monday through Friday, excluding Wednesday (incl. holidays) 1:00PM - 3:30PM.

Large-Size Bulky Refuse (fee required)

Principle items which count as Large-Size Bulky Refuse:

Home appliances

Furniture, beds, carpeting

Bicycles, recreational items

Other: Accordion curtains, tatami, shutters, dividers, doors, etc.

Animal Remains (collection / processing)

- ◆ Application to the Bulky Refuse Reservation Center is required.
- ◆ A handling fee of 1,200 yen is required for one animal.
- ◆ It is free if you drop off the remains.
- ◆ Drop it off at the Hotanigawa Waste Disposal Plant (5-1-1 Taguchi, Hirakata City)
- ◆ Please contact the Bulky Refuse Reservation Center if you find the remains of a stray dog or cat. (No charge for collection)

Special Garbage (fee required)

- ◆ If your application contains over 6 items or when you apply twice or more times in a single month for either "Small-Size Bulky Refuse" and/or "Large-Size Bulky Refuse", your application will be counted as "Special Garbage".
- ◆ Please apply for "Special Garbage" if you have a large volume of garbage from moving or cleaning up.

※ It is necessary to be present at the time of collection for Special Garbage.

Trash Unable to be Collected and Processed by the City

◎ Trash Unable to be Collected and Processed

The City does not collect waste that the city cannot process properly, waste that cannot be taken out following the City rules for disposal, or waste that is defined as industrial waste by law. Please ask a professional waste processing company or store, or properly process it when disposing of it.

- Primary examples of items which cannot be processed Propane gas tanks, fire extinguishers, gas cylinders, paints, fuels, lacquers, thinners, batteries, pesticides, medicines, pianos, automobiles, motorcycles (including parts, etc.), tires, wires, bowling balls, iron dumbbells, other dumbbells, bricks, concrete blocks (CMUs), dirt and sand, debris, construction waste, etc.

◎ Waste from businesses(regular waste) ※ (cannot be disposed of at household garbage collection areas)

● It is the responsibility of companies, stores, and factories, etc., to properly process their own refuse produced by business-related activities under the "Act Pertaining to Processing and Disposal of Refuse". If you cannot properly process refuse on your own, please ask one of the following Hirakata City regular garbage collection companies licensed to collect and transport waste, regardless of the amount of waste.

Licensed Companies (in random order)				
	● URBAN KEEP Co., Ltd.	Tel: 0 7 2 - 8 5 9 - 0 3 0 0	● DELPIS Co., Ltd.	Tel: 0 7 2 - 8 6 6 - 0 4 0 7
	● GAIA Co., Ltd.	Tel: 0 7 2 - 8 9 7 - 0 0 1 2	● CLEANS Co., Ltd.	Tel: 0 7 2 - 8 0 7 - 4 9 0 1
	● COSMIC Co., Ltd.	Tel: 0 7 2 - 8 5 9 - 5 8 3 1	● Sumiyoshi Eco Support Co., Ltd.	Tel: 0 7 2 - 8 0 8 - 9 1 0 8
	● Toshi Create Corporation	Tel: 0 7 2 - 8 5 8 - 0 0 3 7	● Hirakata NETTURBINO Co., Ltd.	Tel: 0 7 2 - 8 9 8 - 4 4 5 5

● When a recyclable home appliance is no longer needed ●

Air conditioners, televisions, refrigerators, freezers, washing machines, clothes dryers



- 1. Items applicable under the Home Appliance Recycling Law
Items applicable under the Home Appliance Recycling Law (Act on Recycling of Specified Kinds of Home Appliances) are listed below.
 - Air Conditioners
 - Televisions (CRT, LCD, Plasma)
 - Refrigerators / Freezers
 - Washing Machines / Clothes Dryers

※ Please use the contact information written below for inquiries regarding recycling fees and collection sites.
※ Recycling fees differ depending on the home appliance manufacturer, etc. Furthermore, separate fees (for collection and transport, etc.) are necessary in addition to the recycling fees.

Home Appliance Recycling Ticket Center 0 1 2 0 - 3 1 9 - 6 4 0
Website http://www.rkc.aeha.or.jp/consumer/recycle_price.html

- 2. Processing of unwanted applicable items
 - Request an electronic appliance store (including small home appliance stores and participating shops which take home appliances for disposal) to take the item (when buying a replacement)
Please ask the shop where you buy the new appliance to take the old appliance away.
(When only disposing of the appliance)
Consult the store at which you bought the appliance or a nearby home appliance store.

※ See the Hirakata City website for participating shops which take home appliances for disposal List of Shops Taking Home Appliances for Disposal
<https://www.city.hirakata.osaka.jp/0000011265.html>
You may also make an inquiry to the Waste Reduction Office

- Bringing Appliances to Designated Collection Sites Directly
 - (1). Preparation Prior to Drop-off
Please make a note of the manufacturer, and the "screen size" for televisions, or the "capacity" for freezers or refrigerators.
 - (2). Paying Recycling Fees
Bring the aforementioned note and fill in the necessary items on the "Home Appliance Recycling Ticket (Post Office Bank Transfer Form for Fees)" supplied by the post office (Japan Post Bank) and pay the recycling fee at a window of the post office.
 - (3). Bringing Appliances to Designated Collection Sites
Bring the unwanted appliance as well as the Home Appliance Recycling Ticket which has been paid for to a designated collection site after checking the office hours, etc., of the designated collection site.

(Designated Collection Site) ● Kofuji Logistics
3-45-1 Kasuganishimachi, Hirakata City Tel: 0 7 2 - 8 0 8 - 3 6 1 1

● About Home Computer Recycling ● - Computer Towers & Displays -

Manufacturers, etc., strive to recycle home computers under the Law for Promotion of Effective Utilization of Resources. Please dispose of computer towers and displays following the recycling instructions of the manufacturer, etc. For more details about how to recycle computers, contact the manufacturers or the "PC3R Promotion Association".

Tel: 03-5282-7685 Website: <http://www.pc3r.jp>



● About Portable Rechargeable Battery Recycling ●

It is obligatory to recover / recycle portable rechargeable batteries under the Law for Promotion of Effective Utilization of Resources. Portable rechargeable batteries use Nickel (Ni), Cadmium (Cd), Cobalt (Co), and other rare resources as primary components. We ask you to please take used portable rechargeable batteries for home use in the recycling boxes of participating shops which recycle them. Please see the Japan Portable Rechargeable Battery Recycling Center website (<http://www.jbrc.com/>) to find a participating shop near you.

● Recycling Cellular Telephones ●

Cell phones, PHS phone bodies, chargers, and batteries will be taken for free at shops bearing this mark. You may view more details about recycling cell phones and PHS phones at the website of the Telecommunications Carriers Association: (<http://www.tca.or.jp/>)



● About Recycling Fire Extinguishers ●

From a notice on September 8, 2005 made by the Ministry of the Environment, manufacturers, etc., using the National Permit System became able to recycle fire extinguishers across nationwide. For details, please contact the manufacturer.

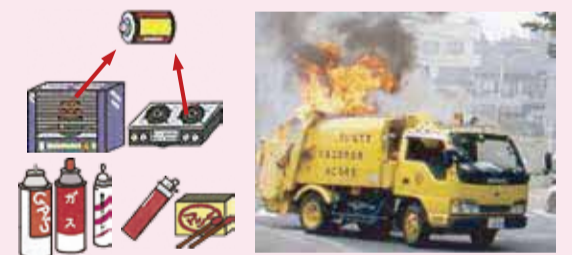
- HATSUTA Eco-Cycle Center 0 1 2 0 - 8 2 2 - 3 0 6
- Yamato Protec Customer Service Center 0 5 7 0 - 0 8 0 - 1 0 0

Fires in garbage trucks are caused by such things as gas canisters and disposable lighters!

Always follow the rules of disposing trash to prevent fires in garbage trucks.

- ◆ After making sure to remove the ignition batteries, dispose of gas ranges, portable gas burners, water heaters, and heaters as "small-size bulky refuse".
- ◆ After using the contents entirely, dispose of gas canisters for lighters, oil cans for lighters, gas canisters for portable burners, and spray cans with "cans, bottles, and glass materials".
- ◆ After using all fuel in the lighter, submerge it in water for about a day so the flint can no longer spark. Dispose of plastic lighters as "regular garbage" and dispose of metal lighters as "small-size bulky refuse".
- ◆ Dispose of portable rechargeable batteries in recycling boxes of participating shops which recycle them.

※ For further details, see ● About Portable Rechargeable Battery Recycling ●



◎ If you are concerned about the disposal of gas canisters and spray cans etc., which are not entirely empty, the "Hotanigawa Waste Disposal Plant" and the "Tobu Waste Disposal Plant" take them Monday through Friday from 9:00AM to 5:00PM, so please bring items directly to one of the plants. For details, please contact the Waste Reduction Office.

Garbage Collection Fureai Support

There is support for picking up household garbage at the entrance for those with a Long-Term Care Level of 1 or higher who live alone, or those with severe disabilities.

Large-Size Bulky Refuse Collection Support

Large-Size Bulky Refuse can be transported from within the house and collected for households whose members (living together) are all of a Long-Term Care Level of 1 or higher, or for households that include those with severe disabilities.

For details about conditions of use, please contact the Waste Reduction Office.

Help to reduce waste and recycle - start the 4Rs today -

Cooperation from all citizens of the City is necessary to further the reduction of waste. Strive toward waste reduction at home with these easy measures!

- ◆ Sort refuse properly
- ◆ Limit plastic bag usage at stores
- ◆ Don't waste food
- ◆ Drain kitchen trash thoroughly



Inquiries Concerning Garbage

- About garbage collection, Garbage Collection Fureai Support, etc.:
Waste Reduction Office Tel: 072-849-7969
- Questions about waste reduction, recycling, and consultation about opening garbage collection areas: Waste Reduction Office Tel: 072-849-5374
- About tags for garbage:
General Affairs Division of the Environment Tel: 072-807-6211
- About touring the garbage processing facilities:
Hotanigawa Waste Disposal Plant Tel: 072-849-0200
Tobu Waste Disposal Plant Tel: 072-858-6962
- About illegal dumping in public places such as roads, parks, waterways, etc.:
Waste Reduction Office Tel: 072-849-7969
- About the scheduled cleaning of roadsides and Children's Plazas (Chibikko Hiroba) and other public spaces over a large area (regional cleaning):
Waste Reduction Office Tel: 072-849-7969